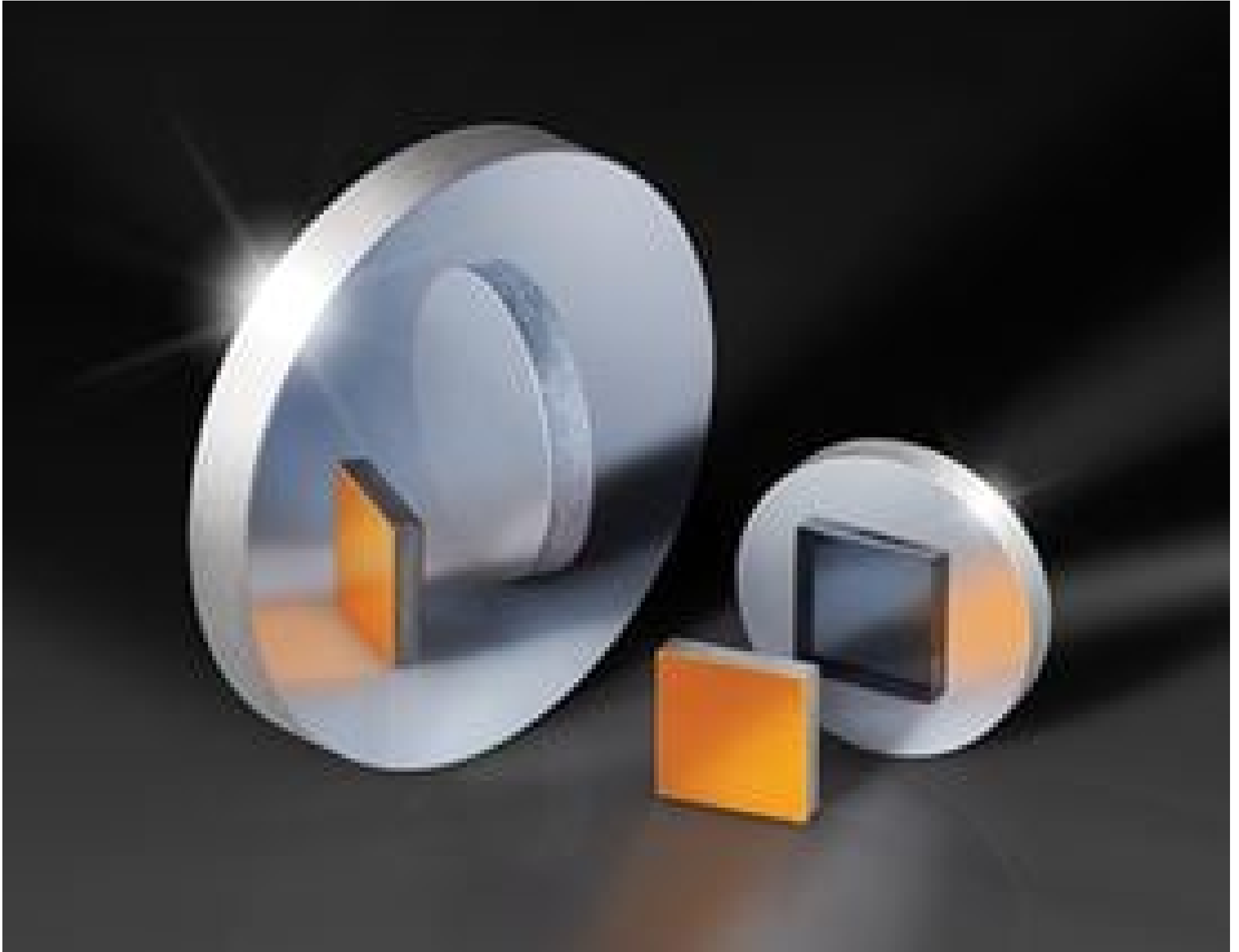


TECHSPEC® 75 x 75mm Protected Gold, λ/20 Mirror



Stock #34-385 3-4 DAYS

⊖ 1 ⊕ €680.⁰⁰

ADD TO CART

Qty 1-5

€680,00

Qty 6+

€543,00

Volume Pricing

[Request Quote](#)

ⓘ Prices shown are exclusive of VAT/local taxes

Product Downloads



SPECIFICATIONS

General

Type:
Flat Mirror

Physical & Mechanical Properties

Back Surface:
Commercial Polish

Dimensions (mm):
75.0 x 75.0 +0.00/-0.20

Clear Aperture (%):
90.00

Edges:
Ground, protective bevel as needed

Parallelism (arcsec):
30.00

Thickness (mm):
7.50

Length (mm):
75.00

Width (mm):
75.00

Optical Properties

Surface Flatness (P-V):
λ/20 (flatness pre-coating)

Substrate:
[Fused Silica](#) (Corning 7980)

Surface Quality:
20-10

Coating Specification:
R_{avg} >96% @ 700 - 2000nm
R_{avg} >96% @ 2000 - 10,000nm

Coating:
Protected Gold (700-10000nm)

Coating Type:
Metal

Wavelength Range (nm):
700 - 10000

Regulatory Compliance

RoHS 2015:
[Compliant](#)

Certificate of Conformance:
[View](#)

REACH 241:
[Compliant](#)

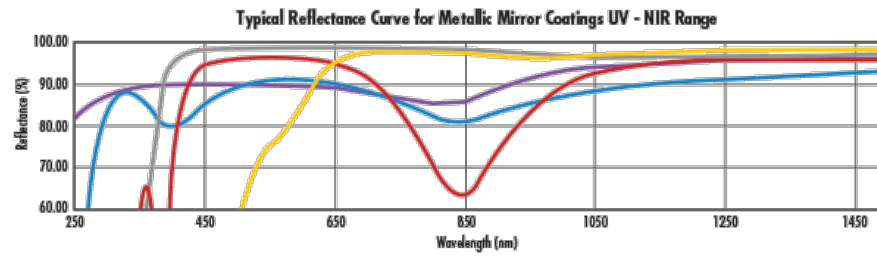
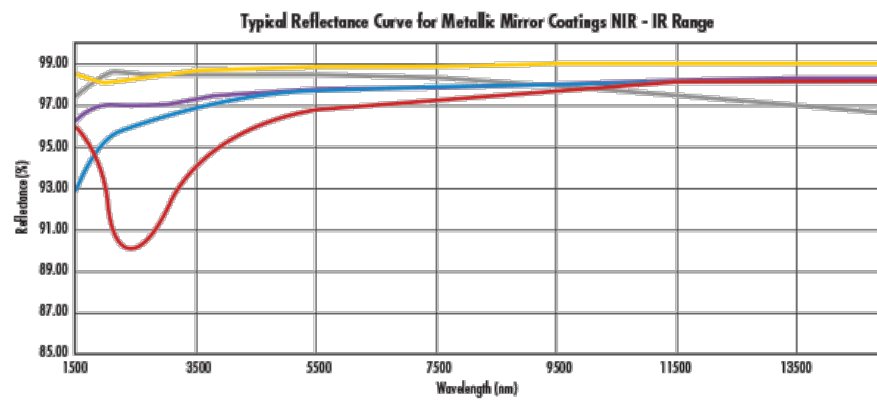
PRODUCT DETAILS

- Precision Fused Silica Substrate
- 20-10 Surface Quality
- Low Coefficient of Thermal Expansion

TECHSPEC® λ/20 First Surface Mirrors are polished to industry leading surface accuracy and quality specifications to minimize reflected wavefront error. These mirrors feature a precision fused silica substrate with a low coefficient of thermal expansion. Multiple coating options are available, allowing these mirrors to be integrated into applications spanning the visible through infrared spectra. TECHSPEC® λ/20 First Surface Mirrors are ideal for beam steering and reflection applications and are available in a variety of size, thickness, and coating options.

Note: Surface flatness is measured before coating.

TECHNICAL INFORMATION



| Protected Aluminum | | Enhanced Aluminum | | UV Enhanced Aluminum | | Protected Gold | | Protected Silver | |
|--------------------|--------------|-------------------|--------------|----------------------|--------------|----------------|--------------|------------------|--------------|
| Range (µm) | % Reflection | Range (µm) | % Reflection | Range (µm) | % Reflection | Range (µm) | % Reflection | Range (µm) | % Reflection |
| 0.4 - 0.7 | 85 | 0.45 - 0.65 | 95 | 0.25 - 0.45 | 89 | 0.7 - 2.0 | 96 | 0.45 - 2.0 | 98 |
| 0.4 - 2.0 | 90 | - | - | 0.25 - 0.70 | 85 | 2.0 - 10.0 | 96 | 2.0 - 10.0 | 98 |

COMPATIBLE MOUNTS