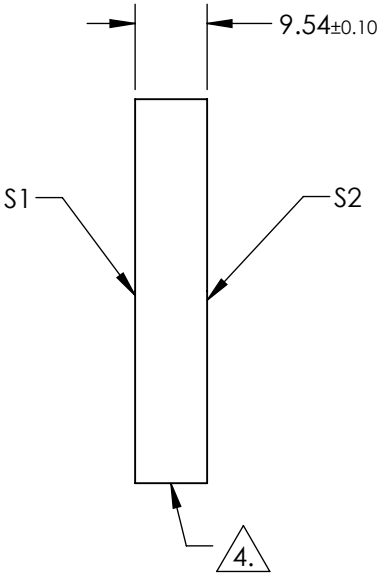
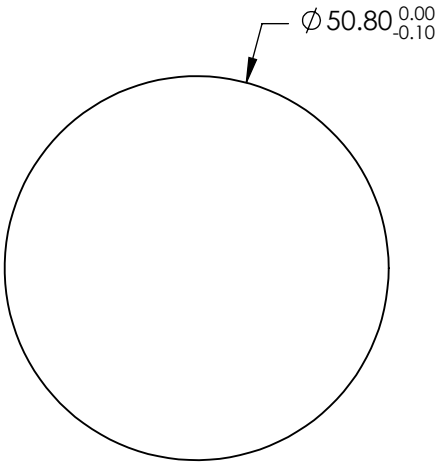
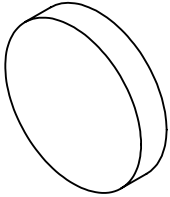


NOTES:

- 1. SUBSTRATE:  
FUSED SILICA
- 2. SURFACE S2 TO BE PARALLEL TO SURFACE S1 TO WITHIN <3 ARCmin
- 3. COATING (APPLY ACROSS CLEAR APERTURE)  
S1: R(abs) S & P > 99.80% @ 400nm @ 0-45° AOI
- S2: NONE
- 4. FINE GRIND SURFACE
- 5. POWER, IRREGULARITY, AND SURFACE QUALITY SPECIFICATIONS APPLY  
ACROSS CLEAR APERTURE
- 6. CLEAR APERTURE AND COATING APERTURE ARE CENTERED ON SURFACES




**FOR INFORMATION ONLY:  
DO NOT MANUFACTURE  
PARTS TO THIS DRAWING**

SPECIFICATIONS SUBJECT TO CHANGE WITHOUT NOTICE  
DIMENSIONS ARE FOR REFERENCE ONLY

	S1	S2
SHAPE	PLANO	PLANO
SURFACE QUALITY	10 - 5	COMMERCIAL POLISH
SURFACE FLATNESS	$\lambda/10$	N/A
CLEAR APERTURE	$\varnothing 45.72$	N/A
COATING APERTURE	$\varnothing 45.72$	N/A
BEVEL	PROTECTED AS NEEDED	PROTECTED AS NEEDED

THIRD ANGLE  
PROJECTION

ALL DIMS IN      mm

 **Edmund Optics®**

TITLE	50.8mm Dia., 9.54mm Thick, Fused Silica 400nm Ti:Sapphire Mirror, 0-45 Deg AOI		
DWG NO	28991	SHEET 50 OF 86	