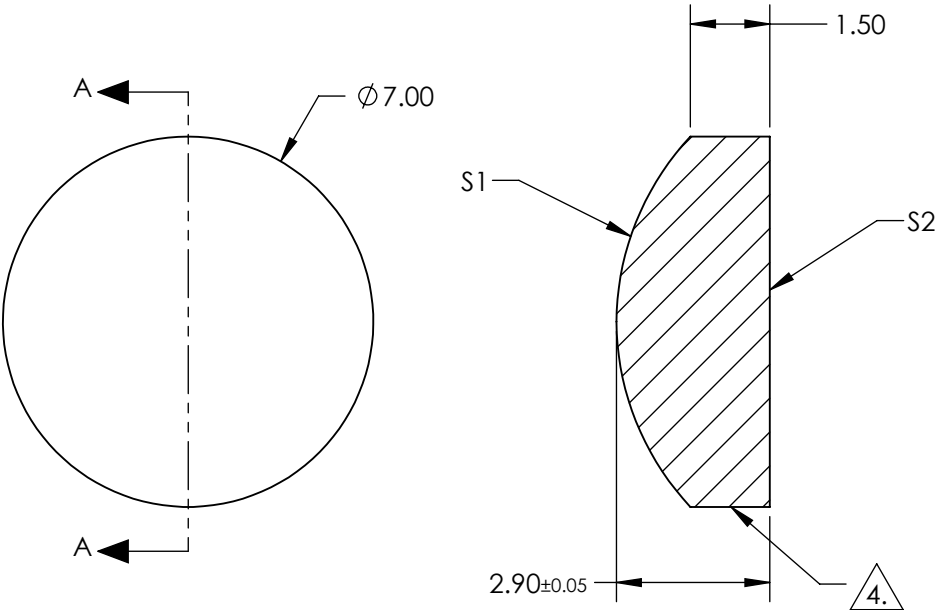


- NOTES:
- 1. SUBSTRATE:  
N-BK7
  - 2. CENTERING TOLERANCE (AT 587.6nm):  
BEAM DEVIATION (HALF ANGLE): <3 ARCMIN
  - 3. COATING (APPLY ACROSS CLEAR APERTURE)  
S1 & S2: NONE
  - 4. FINE GRIND SURFACE
  - 6. POWER, IRREGULARITY, AND SURFACE QUALITY  
SPECIFICATIONS APPLY ACROSS CLEAR APERTURE
  - 7. ROHS COMPLIANT



**FOR INFORMATION ONLY:  
DO NOT MANUFACTURE  
PARTS TO THIS DRAWING**

SPECIFICATIONS SUBJECT TO CHANGE WITHOUT NOTICE  
DIMENSIONS ARE FOR REFERENCE ONLY

	S1	S2
SHAPE	CONVEX	PLANO
RADIUS	5.17	INFINITY
SURFACE QUALITY	40-20	40-20
CLEAR APERTURE	Ø 6.3	Ø 6.3
IRREGULARITY AT 632.8nm	λ/4	N/A
POWER AT 632.8nm	1.5λ	1.5λ
BEVEL	PROTECTED AS NEEDED	PROTECTED AS NEEDED

THIRD ANGLE  
PROJECTION

ALL DIMS IN      mm

**Edmund Optics®**

TITLE	7.0mm Dia. x 10.0mm FL, Uncoated, Plano-Convex Lens	
DWG NO	28947	SHEET 21 OF 27