

NOTES:

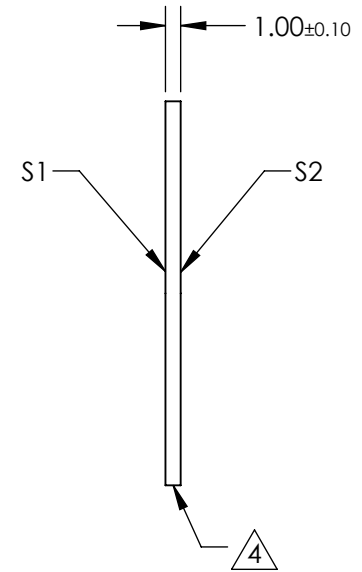
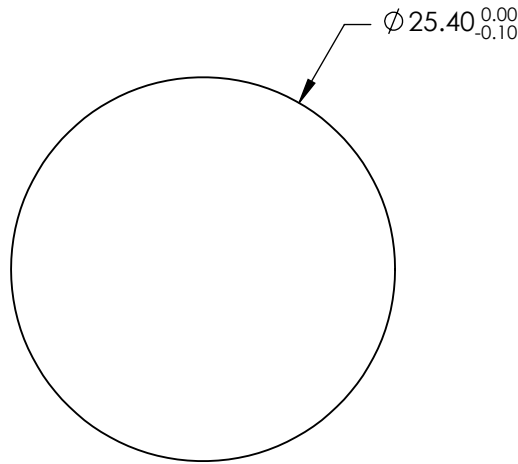
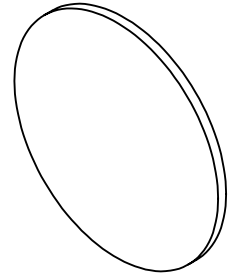
1. SUBSTRATE: FUSED SILICA
2. SURFACE S2 TO BE PARALLEL TO SURFACE S1 TO WITHIN <0.5 ARCMIN
3. COATING (APPLY ACROSS CLEAR APERTURE)
 S1: Laser V-Coat (266nm)
 Rabs <0.25% @ 266nm @ 0 ±5° AOI

DAMAGE THRESHOLD,
 PULSED: 3 J/cm² @ 266nm, 20ns, 20Hz

S2: NONE

△ FINE GRIND SURFACE

5. ROHS COMPLIANT



**FOR INFORMATION ONLY:
 DO NOT MANUFACTURE
 PARTS TO THIS DRAWING**

SPECIFICATIONS SUBJECT TO CHANGE WITHOUT NOTICE
 DIMENSIONS ARE FOR REFERENCE ONLY

EO® Edmund Optics®

	S1	S2
SHAPE	PLANO	PLANO
SURFACE QUALITY	20 - 10	20 - 10
CLEAR APERTURE	90%	90%
BEVEL	PROTECTED AS NEEDED	PROTECTED AS NEEDED

THIRD ANGLE PROJECTION

ALL DIMS IN mm

TITLE	DWG NO	SHEET
25.4mm Dia., 1mm Thick, 266nm, Nd:YAG Laser Line Beam Sampler	29018	5 OF 8