

NOTES:

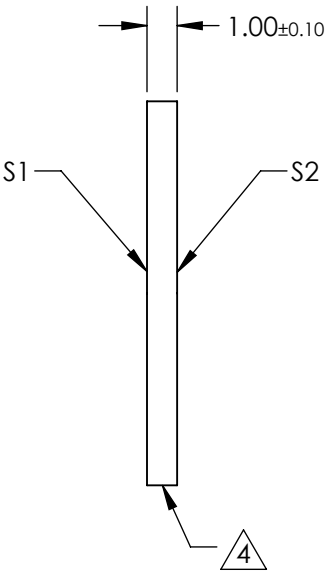
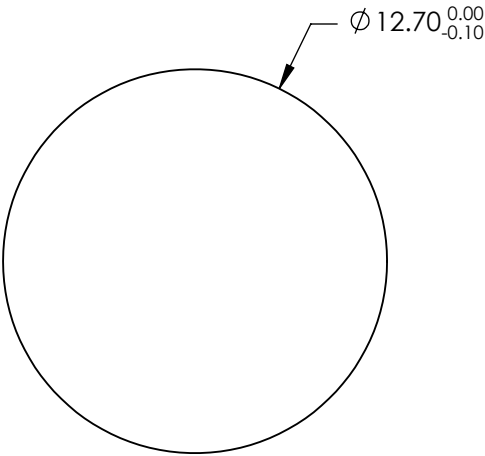
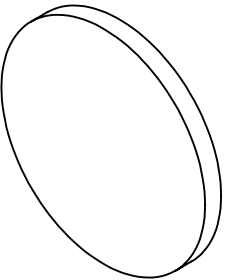
- 1. SUBSTRATE: FUSED SILICA
- 2. SURFACE S2 TO BE PARALLEL TO SURFACE S1 TO WITHIN <0.5 ARCMIN
- 3. COATING (APPLY ACROSS CLEAR APERTURE)
S1: Laser V-Coat (1064nm)
Rabs <0.25% @ 1064nm @ 0 ±5° AOI

DAMAGE THRESHOLD,
PULSED: 15 J/cm2 @ 1064nm, 20ns, 20Hz

S2: NONE

4. FINE GRIND SURFACE

- 5. ROHS COMPLIANT

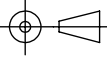


**FOR INFORMATION ONLY:
DO NOT MANUFACTURE
PARTS TO THIS DRAWING**

SPECIFICATIONS SUBJECT TO CHANGE WITHOUT NOTICE
DIMENSIONS ARE FOR REFERENCE ONLY

	S1	S2
SHAPE	PLANO	PLANO
SURFACE QUALITY	20 - 10	20 - 10
CLEAR APERTURE	90%	90%
BEVEL	PROTECTED AS NEEDED	PROTECTED AS NEEDED

THIRD ANGLE
PROJECTION



ALL DIMS IN

mm

EO® **Edmund Optics®**

TITLE

12.7mm Dia., 1mm Thick, 1064nm, Nd:YAG
Laser Line Beam Sampler

DWG NO

29013

SHEET
4 OF 8