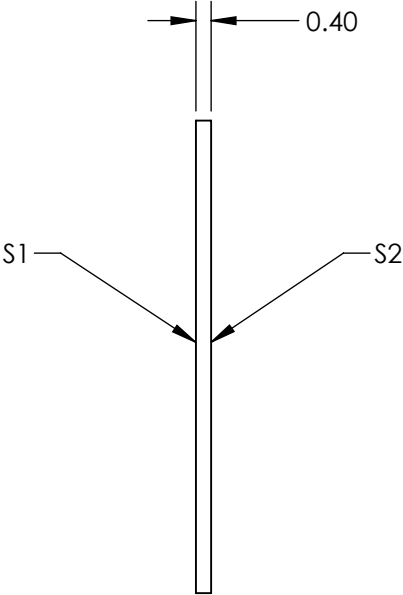
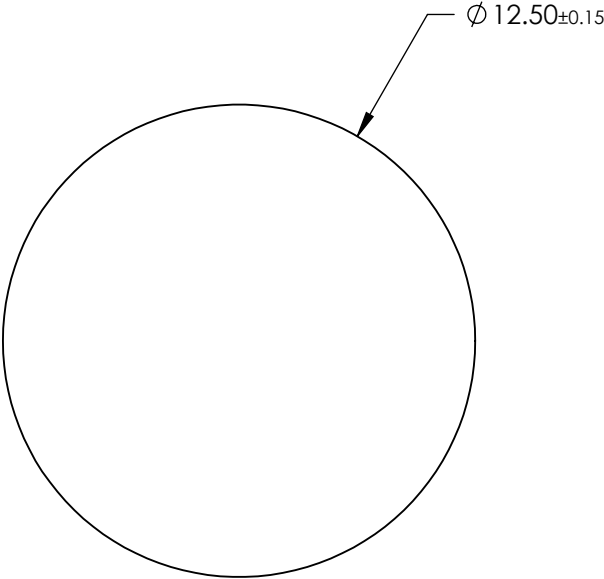
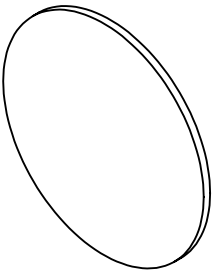


FOR INFORMATION ONLY:
DO NOT MANUFACTURE
PARTS TO THIS DRAWING




SPECIFICATIONS SUBJECT TO CHANGE WITHOUT NOTICE
DIMENSIONS ARE FOR REFERENCE ONLY

| | S1 | S2 |
|----------------------------|---------------------|---------------------|
| SHAPE | PLANO | PLANO |
| CLEAR APERTURE | >90% | >90% |
| FULL WIDTH HALF MAX (FWHM) | 10.0nm | 10.0nm |
| BEVEL | PROTECTED AS NEEDED | PROTECTED AS NEEDED |

THIRD ANGLE
PROJECTION

ALL DIMS IN

mm

 **Edmund Optics®**

| | | |
|--------|----------------------------------------------------------------------------|-------------------|
| TITLE | Everix Ultra-Thin Narrow Bandpass Filter, 640nm, 12.5mm Dia., 10nm FWHM | |
| DWG NO | 26990 | SHEET 19 OF 21 |