

NOTES:

1. SUBSTRATE MATERIAL:
FUSED SILICA

2. CENTERING BEAM DEVIATION:

S1 & S2 BEAM DEVIATION TO BE <3 ARCMIN
S4 & S5 BEAM DEVIATION TO BE <3 ARCMIN

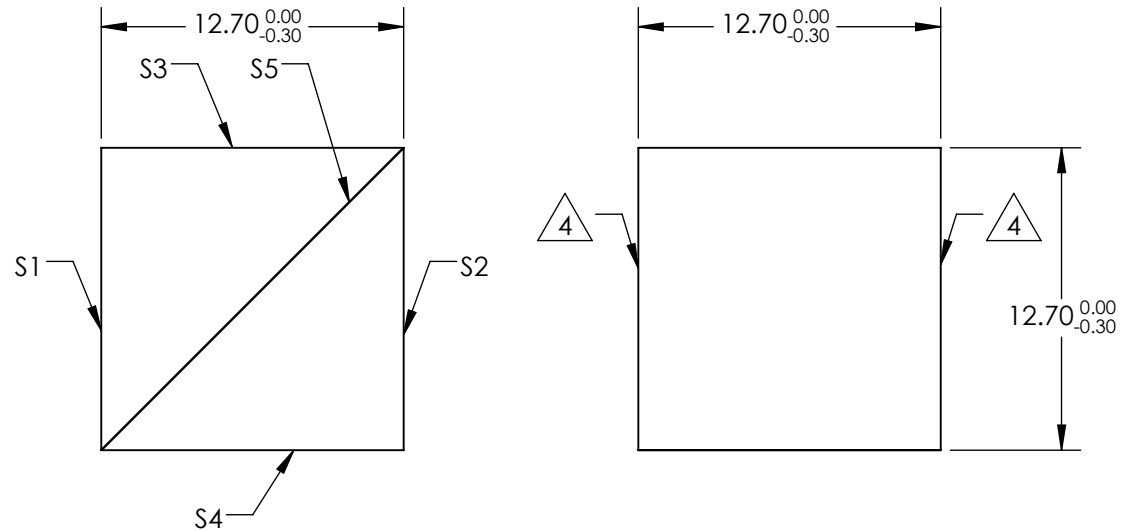
3. COATING (APPLY ACROSS CLEAR APERTURE)

S1, S2, S3 & S4: NONE
S5: EXTINCTION RATIO: $T_p/T_s > 1000:1$ @ 1064nm
TRANSMISSION: $TP > 98\%$ @ 1064nm

DAMAGE THRESHOLD, PULSED:
TYPICAL: 20 J/cm² @ 1064nm 10ns, 20Hz

 FINE GROUND SURFACE

5. ROHS COMPLIANT

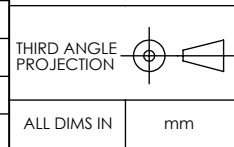


**FOR INFORMATION ONLY:
DO NOT MANUFACTURE
PARTS TO THIS DRAWING**

SPECIFICATIONS SUBJECT TO CHANGE WITHOUT NOTICE
DIMENSIONS ARE FOR REFERENCE ONLY

 **Edmund Optics®**

	VALUE
SURFACE FLATNESS	$\lambda/6$
SURFACE QUALITY	20-10
MIN CLEAR APERTURE	11.43 x 11.43
BEVEL MAX FACE	PROTECTIVE AS NEEDED



TITLE	12.7mm x 1064nm, HIGH ENERGY POLARIZING CUBE BEAMSPLITTER		
DWG NO	88234	SHEET	1 OF 1